

Terra-Grip Tine Beam Shims

We are receiving reports of isolated instances where the Terragrip tine beams are not being shimmed in the correct manner as per the instruction in the manual. Failure to adhere to these instructions will result in premature wear and damage of the tine beam pivot. Please find below copy of the instructions which appear in the operators manual. Please ensure your customers are made aware of this adjustment. If extra shims are required please order part number P08440.

5.4 Terra-Grip Tine Beams

A pair of shims located within the tine beam on 380 models are there to retain the tightness while the machine is in the work position. These shims create a fulcrum which, when the lock bolt is tightened, locks the the wing securely in position by removing clearances in the pivot. The amount of shims can be varied to give a gap of 2-3mm at the point indicated in *Fig. 5.02* before tightening the lock bolt (which will close the gap).



Fig. 5.01: Inner Tine Beam Shims

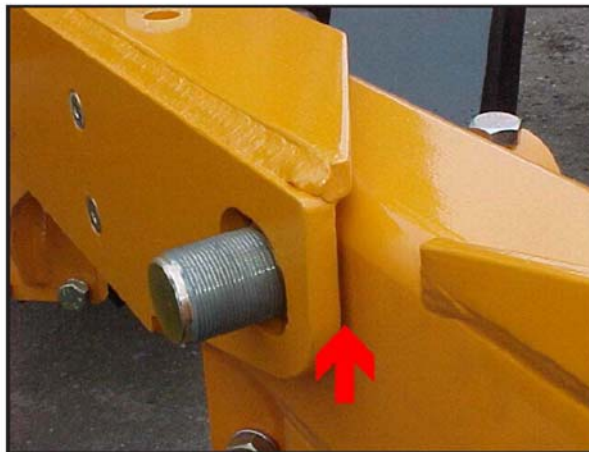


Fig. 5.02: Tightening the Tine Beam