

X-Press Hub Tightening Procedure

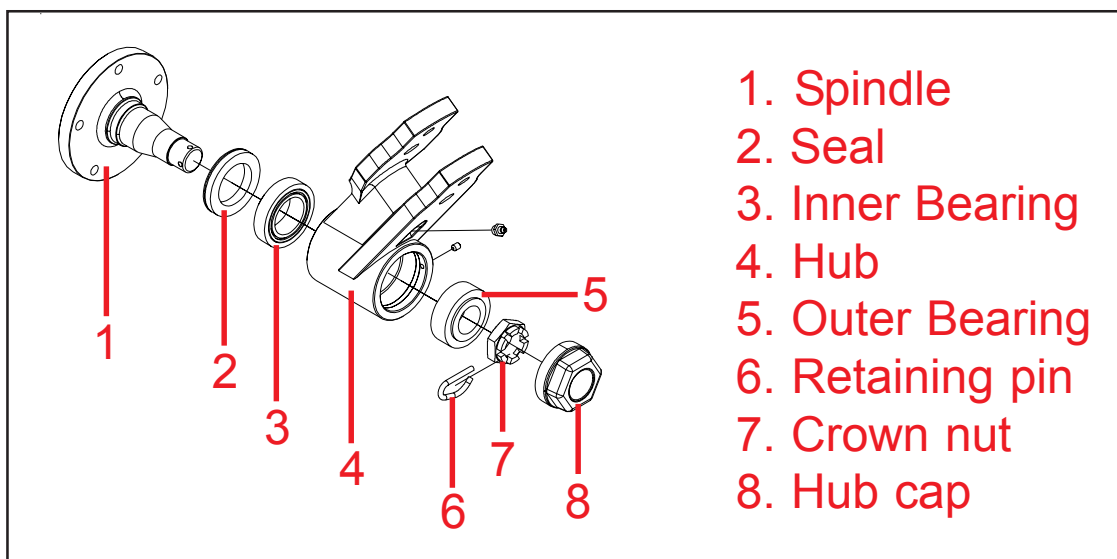
On X-Press disc hubs the tapered roller bearings are held tight axially through a wide surface crown nut.

A 45° to 45° adjustment is possible. This ensures a maximum step of 0.18 mm in the adjustment of the axial play.

An alloy steel retention clip pin locks the nut in the right position.

To correctly adjust the axial play:

- 1 Ensure that the bearing seal is in the correct orientation when replacing / assembling components.
- 2 Ensure that the spindle is free from dirt and the nut and outer bearing can easily slide on it.
- 3 Tighten the crown nut with a hand spanner (a torque wrench is not required) while turning the hub clockwise until the bearing drags slightly (you feel the hub turning heavily). Some resistance will be due to friction from the seal.
- 4 Turn back the crown nut to the next locking position. Even if the tightening of the nut has reached an exact fixing position, turn it back.
- 5 Insert the retaining pin and hook the bow spring in the groove of the crown nut.
- 6 Try to shake/rock the outer edge of the hub/spindle: play of 0.1 / 0.2mm will not reduce the bearings' life and, in addition, prevents overheating. If the adjustment is correct the hub should turn freely with the only friction being from the seal.



Euan Adamson

Service Manager

Tel: (01529) 301210

email: euan.adamson@simba.co.uk