

IMPORTANT MAINTENANCE NOTICE

It is important when replacing the new labyrinth type bearing seals in X-Press disc hubs that the seal is fitted the right way round. The chamfered lip side should be at the outside of the bearing housing (see *fig. a*). This chamfered lip prevents dirt ingress into the housing and also allows grease to be flushed through when greasing.



fig. a - Correct Seal Orientation

Also, Simba recommend that the seal and outermost bearing are assembled on the spindle (as per *fig. b*) before inserting it into the housing and reassembling the unit (*fig. c*).



fig. b - Spindle w/Bearing & Seal

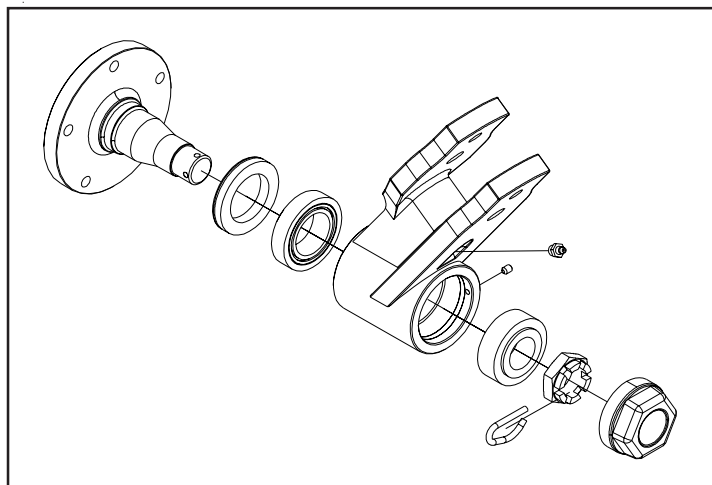


fig. c - Hub Reassembly

Euan Adamson
Service Manager

Tel: (01529) 301210

email: euan.adamson@simba.co.uk