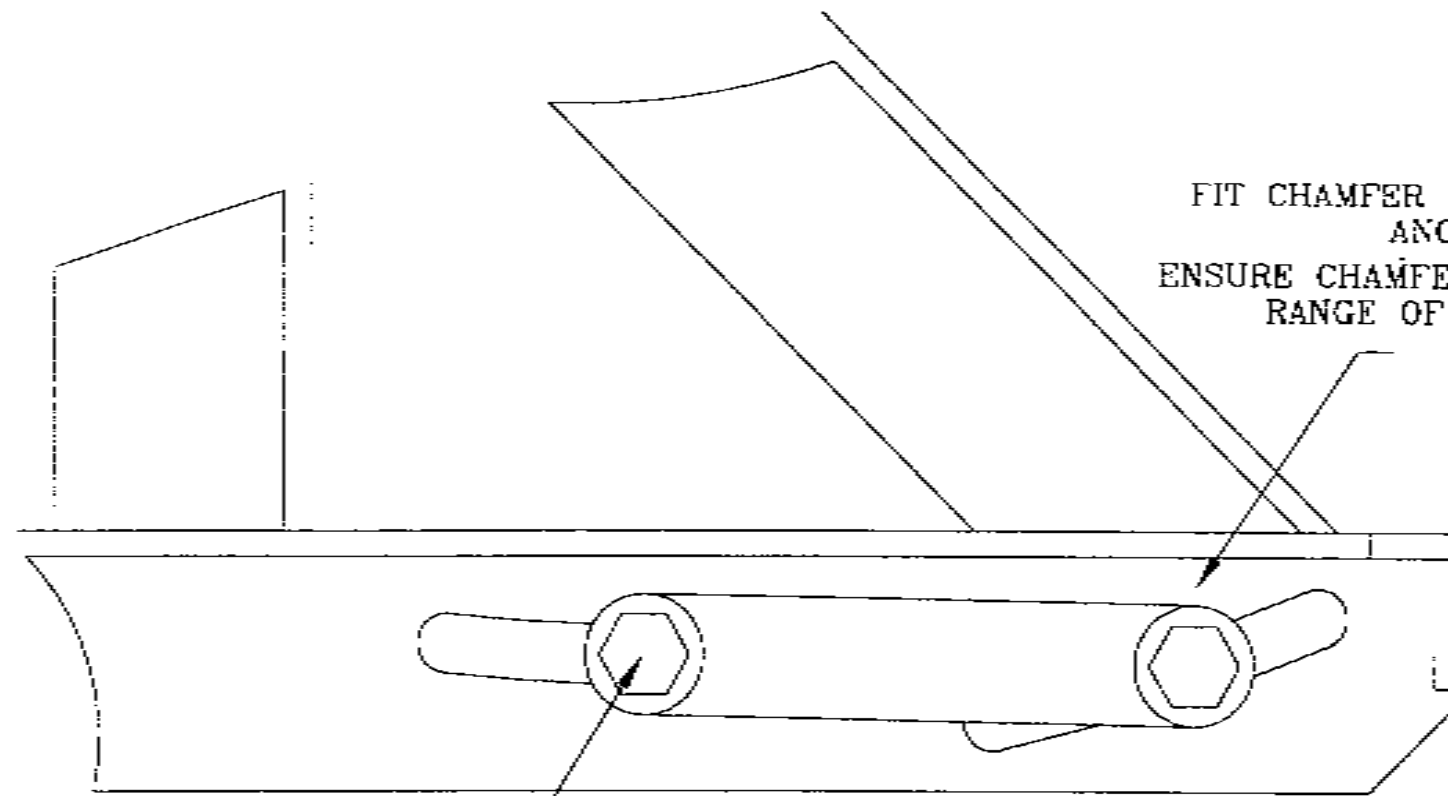


SIMBA

**2B, 3B, 12C, 23C & 34C SERIES
FOLDING WING
DISC HARROW**



FIT CHAMFER TO SLOT NEAREST
ANGLE FACE
ENSURE CHAMFER ALLOWS FOR FULL
RANGE OF ADJUSTMENTS

M30x110
P3120

C' SERIES - GANG SLIDE TIE

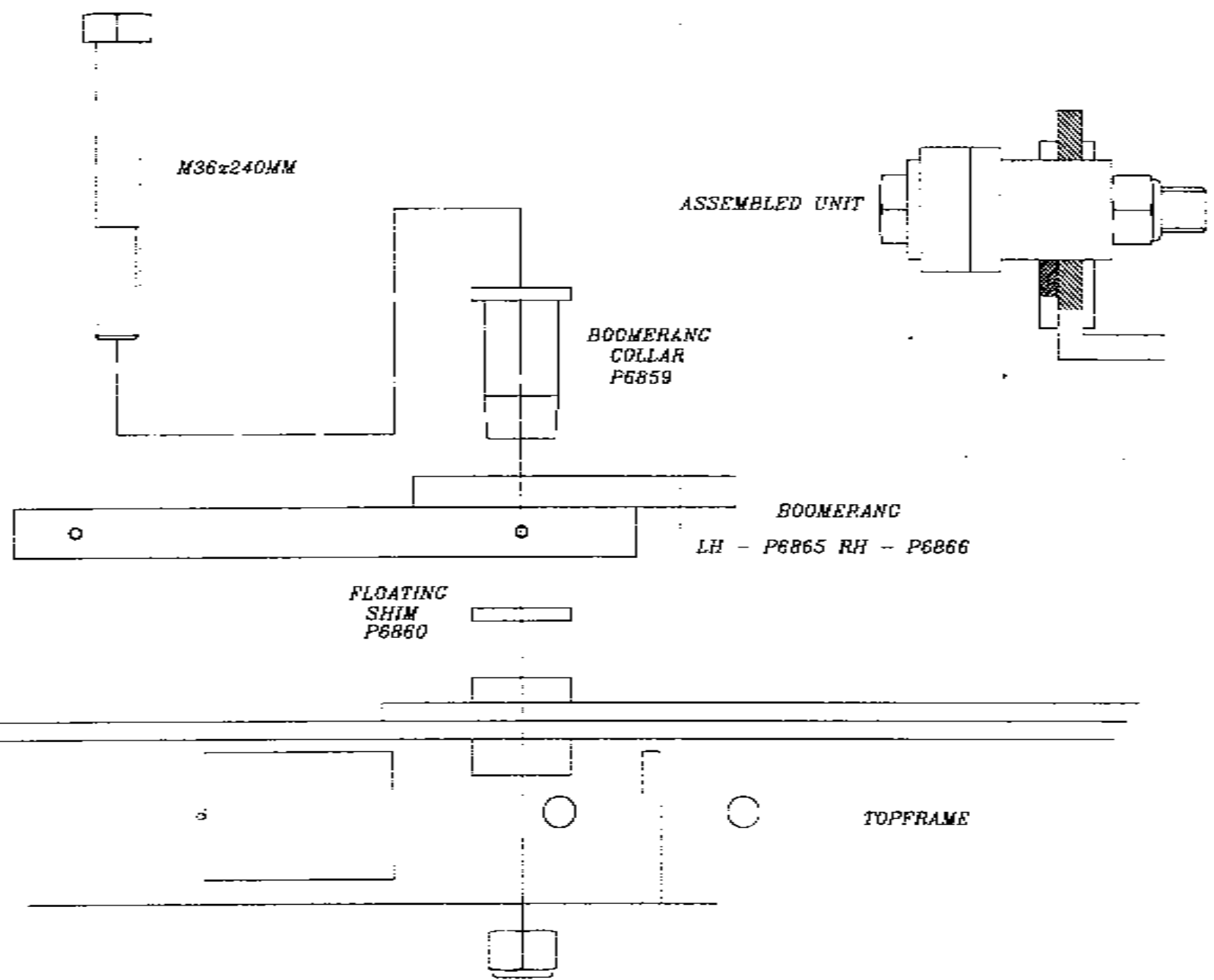
UPDATED
19/05/98

FROM SERIAL NO.
ALL

TO SERIAL NO.

ISSUE
A

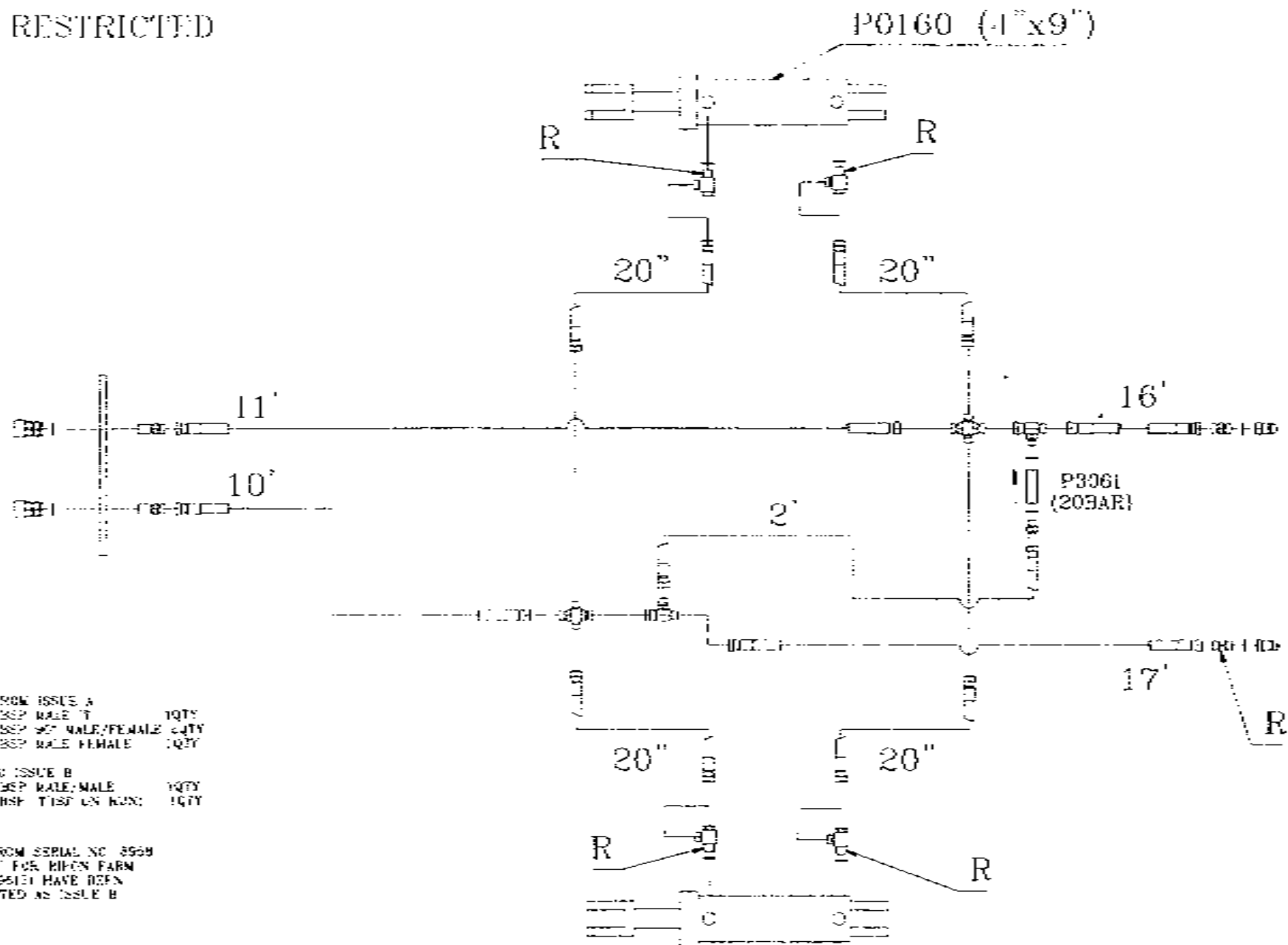
DRAWING NO.
AS0201



SERIES - 12C, 23C AND 34C BOOMERANG BUSH ASSEMBLY

UPDATED 19/2/07	FROM SERIAL NO.	TO SERIAL NO.	ISSUE B	DRAWING NO. AS0173
--------------------	-----------------	---------------	------------	-----------------------

R = RESTRICTED



DELETIONS FROM ISSUE A
 P0004 1/2" BSP MALE 'T' 1QTY
 P0004 1/2" BSP 90° MALE/FEMALE 1QTY
 P0006 1/2" BSP MALE FEMALE 1QTY

ADDITIONS TO ISSUE B
 P0002 1/2" BSP MALE/MALE 1QTY
 P0015 1/2" BSP TIEB LN NUTS 1QTY

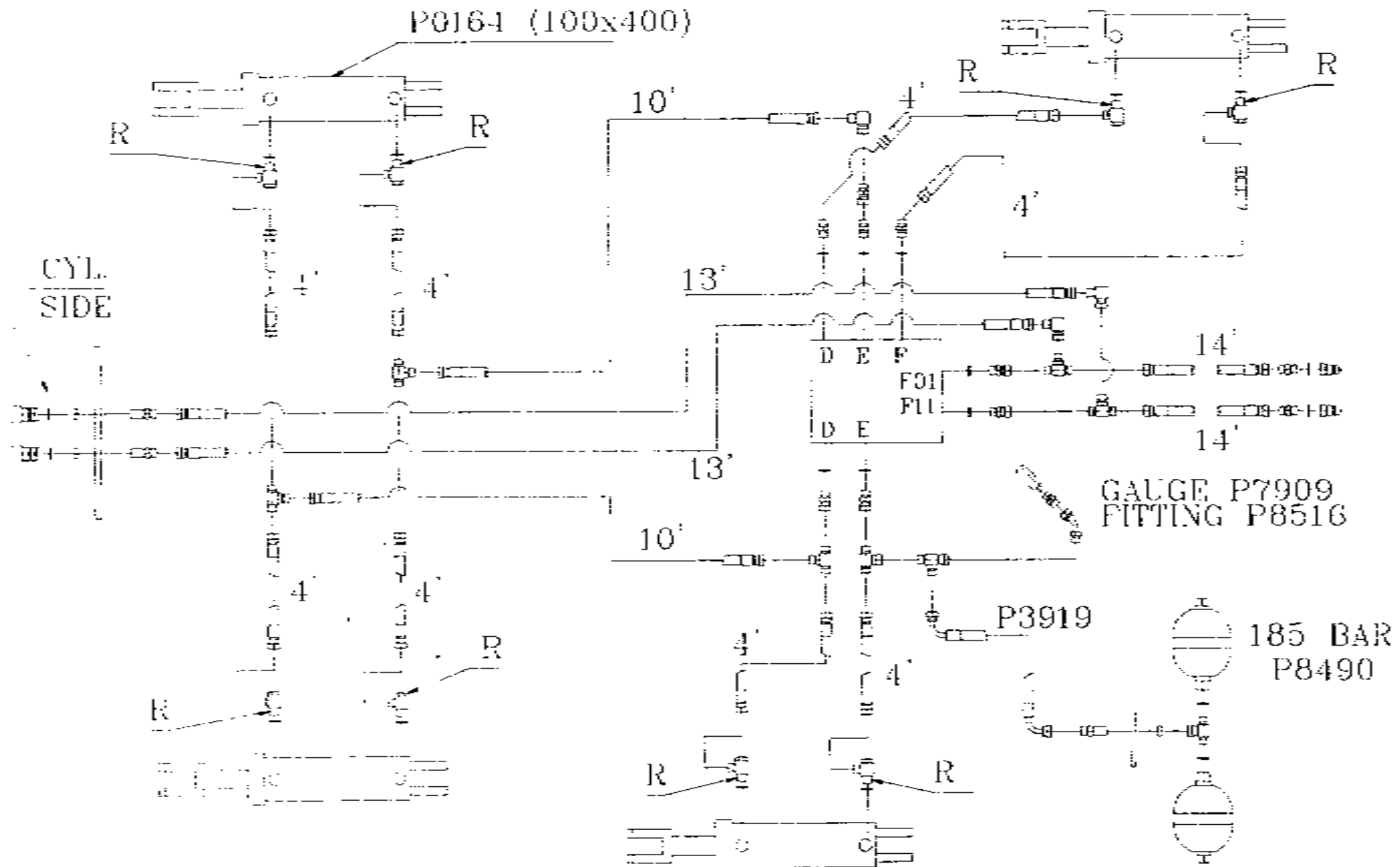
MACHINES FROM SERIAL NO. 8999
 2000 TO 41 FOR BIRCH FARM
 WORKS NO. 25151 HAVE BEEN
 FACTORY FITTED AS ISSUE B

HYDRAULIC KIT P8627B

'99 SPEC. N/C F/W DISC-LIFT HYDRAULICS

UPDATED	FROM SERIAL NO	TO SERIAL NO	ISSUE	DRAWING NO
05/4/99			B	AS0555

R = RESTRICTED

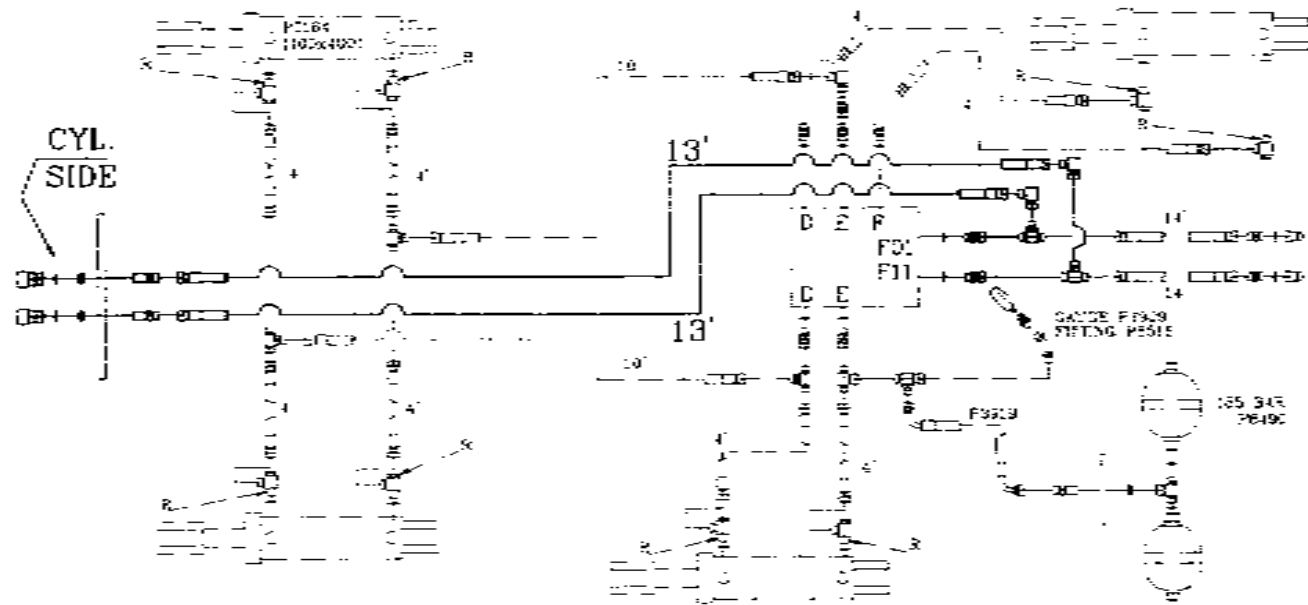


HYDRAULIC KIT P8627
MANIFOLD P8472 SEE SAFETY INFORMATION

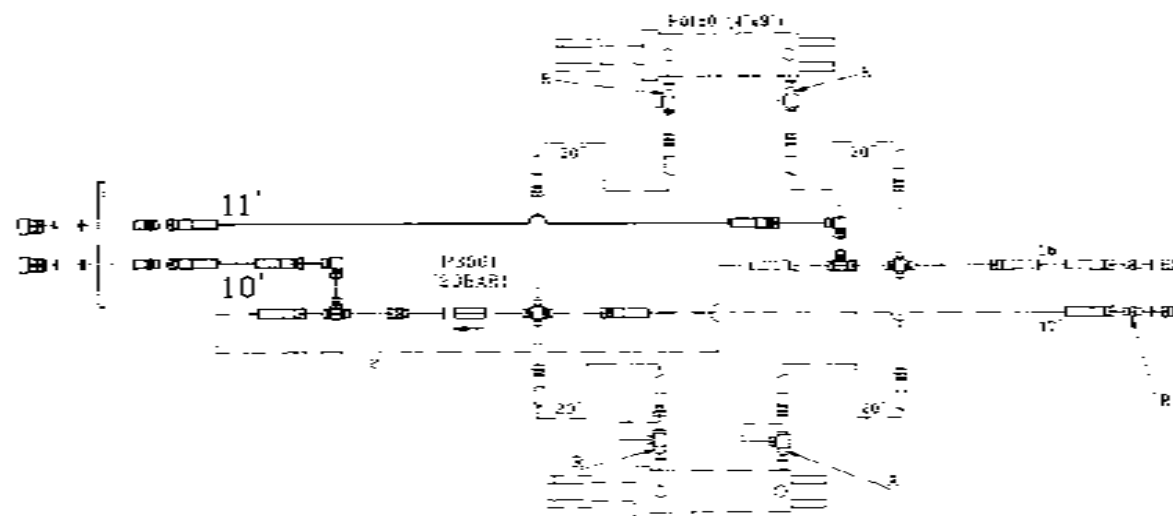
99 SPEC. N.C. F.W. DISC- WING HYDRAULICS

UPDATED FROM SERIAL NO	TO SERIAL NO	ISSUE	DRAWING NO
17/11/99		A	AS0556

WING HYDRAULICS



LIFT HYDRAULICS

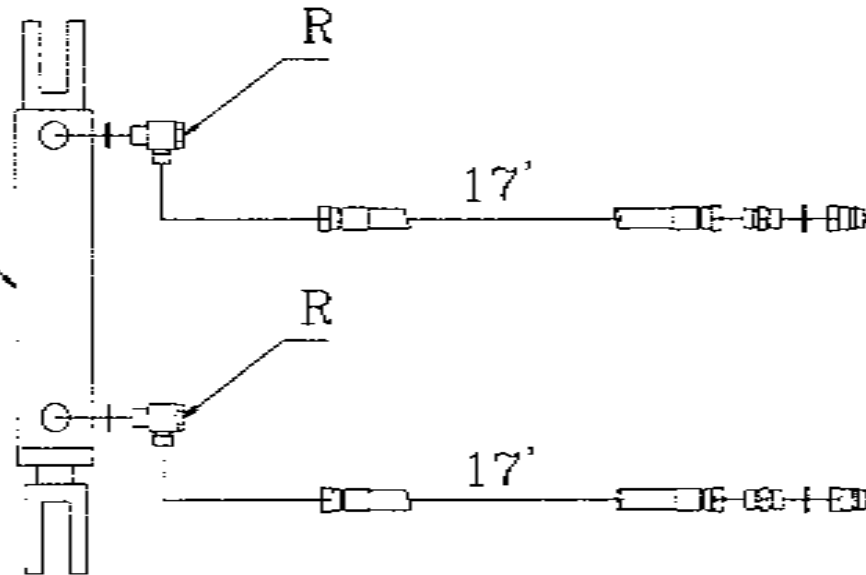


'99 SPEC ECONOMY N/C F/W DISC.
 REAR DRAWBAR HYDRAULIC KIT

DRAWN 5/2/99 UPDATED KA/02/02	PART NUMBER	FROM SERIAL NO	TO SERIAL NO	ISSUE, DRAWING NO. A:AS0571
--	-------------	----------------	--------------	--------------------------------

R = RESTRICTED

P3241 (75x250)
FITTED WITH
55mm INTL.
RESTRICTOR



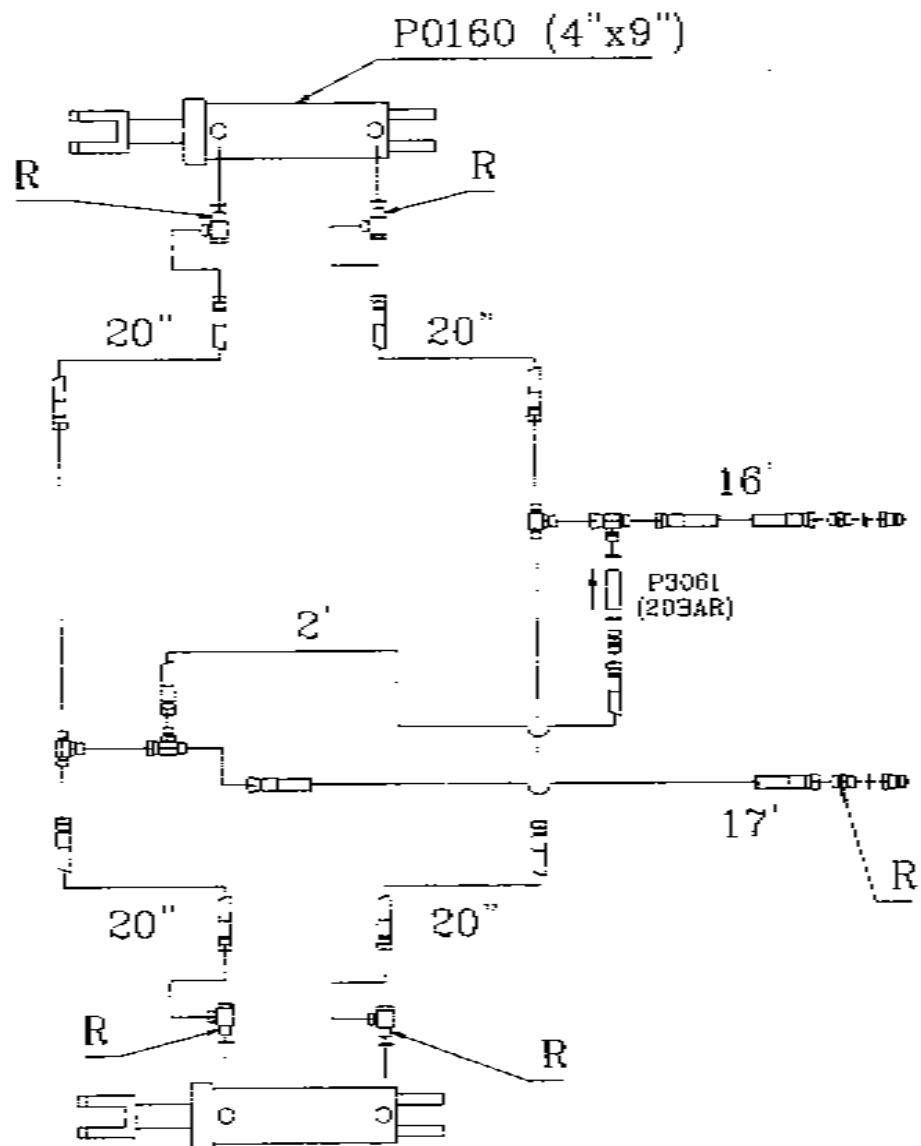
'99 SPEC STANDARD N/C F/W DISC
HYDRAULIC KIT P8627

'99 SPEC ECONOMY N/C F/W DISC
HYDRAULIC KIT U1214

'99 SPEC. N/C F/W DISC - GANG ANG. HYD.

UPDATED	FROM SERIAL NO.	TO SERIAL NO.	ISSUE	DRAWING NO.
19/11/99			A	AS0557

R = RESTRICTED



DELETIONS FROM ISSUE A
 F0209 1/2" BSP MALE 4 WAY 1QTY

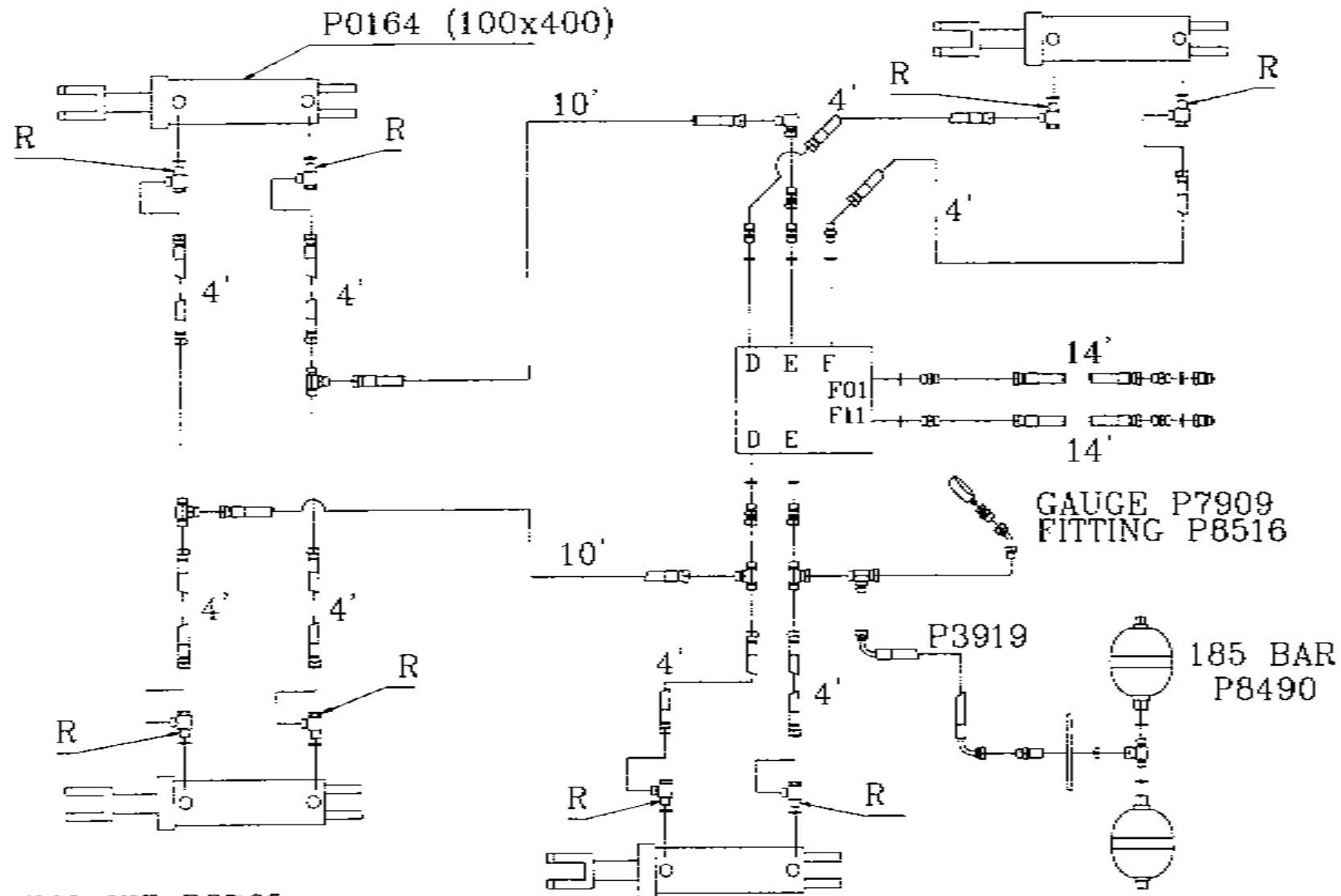
ADDITIONS TO ISSUE B
 F0204 1/2" BSP MALE T 2QTY
 P0216 1/2" BSP T ISF ON RUN 2QTY

28/4/99
 TO DATE, THERE HAVE BEEN NO
 N/C P/T ECONOMY M/C'S BUILT

HYDRAULIC KIT P8756B

'99 SPEC. N/C F/W ECONOMY DISC-LIFT HYDRAULICS	UPDATED	FROM SERIAL NO	TO SERIAL NO.	ISSUE	DRAWING NO
	15/4/99			B	AS0568

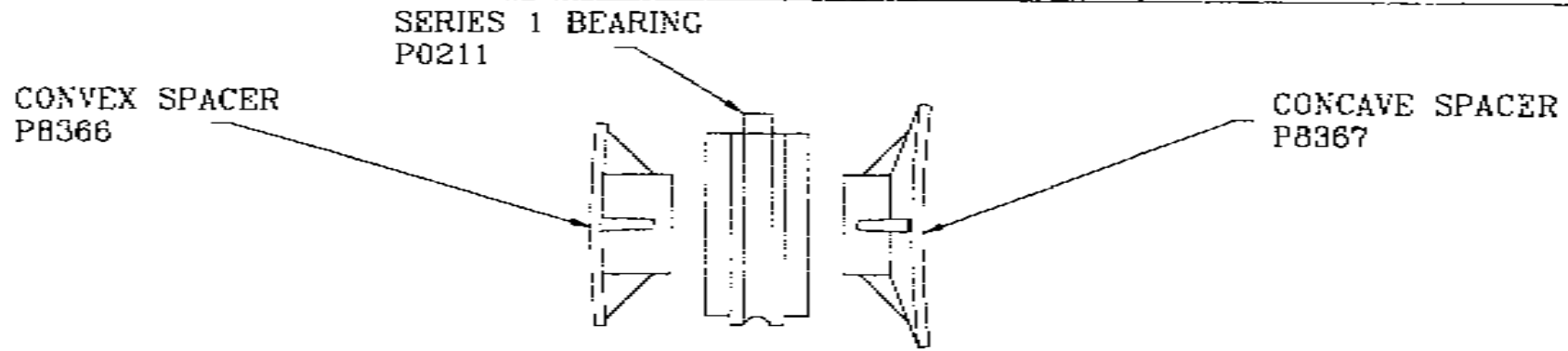
R = RESTRICTED



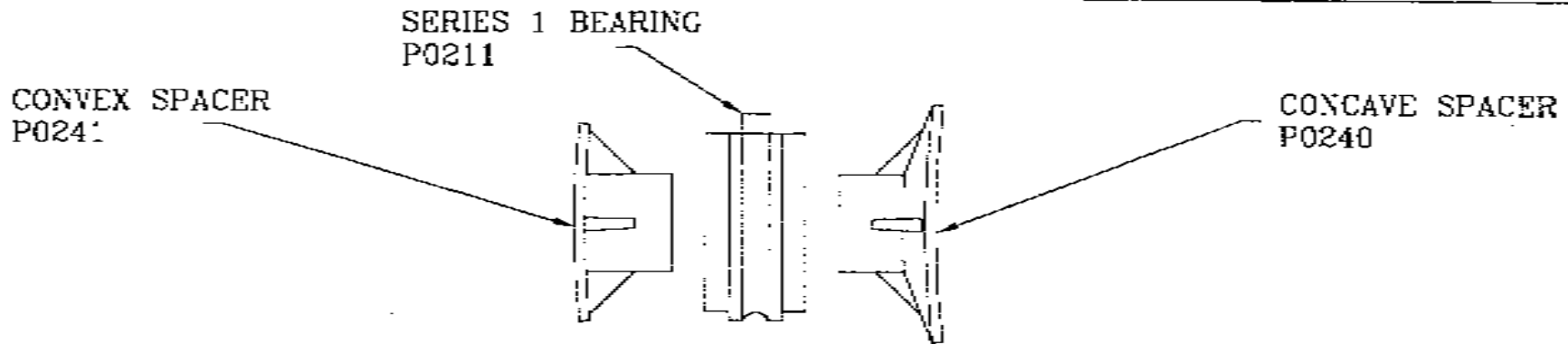
HYDRAULIC KIT P8765
MANIFOLD P8472 SEE SAFETY INFORMATION

'99 SPEC. N/C F/W ECONOMY DISC- WING HYDRAULICS

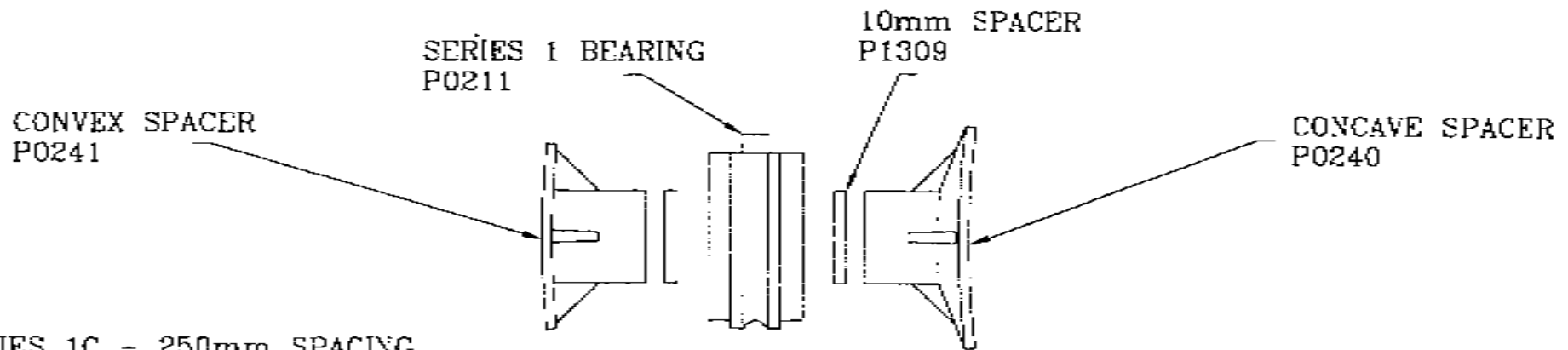
UPDATED	FROM SERIAL NO.	TO SERIAL NO.	ISSUE	DRAWING NO.
2/2/99			A	AS0567



SERIES 1A - 200mm SPACING



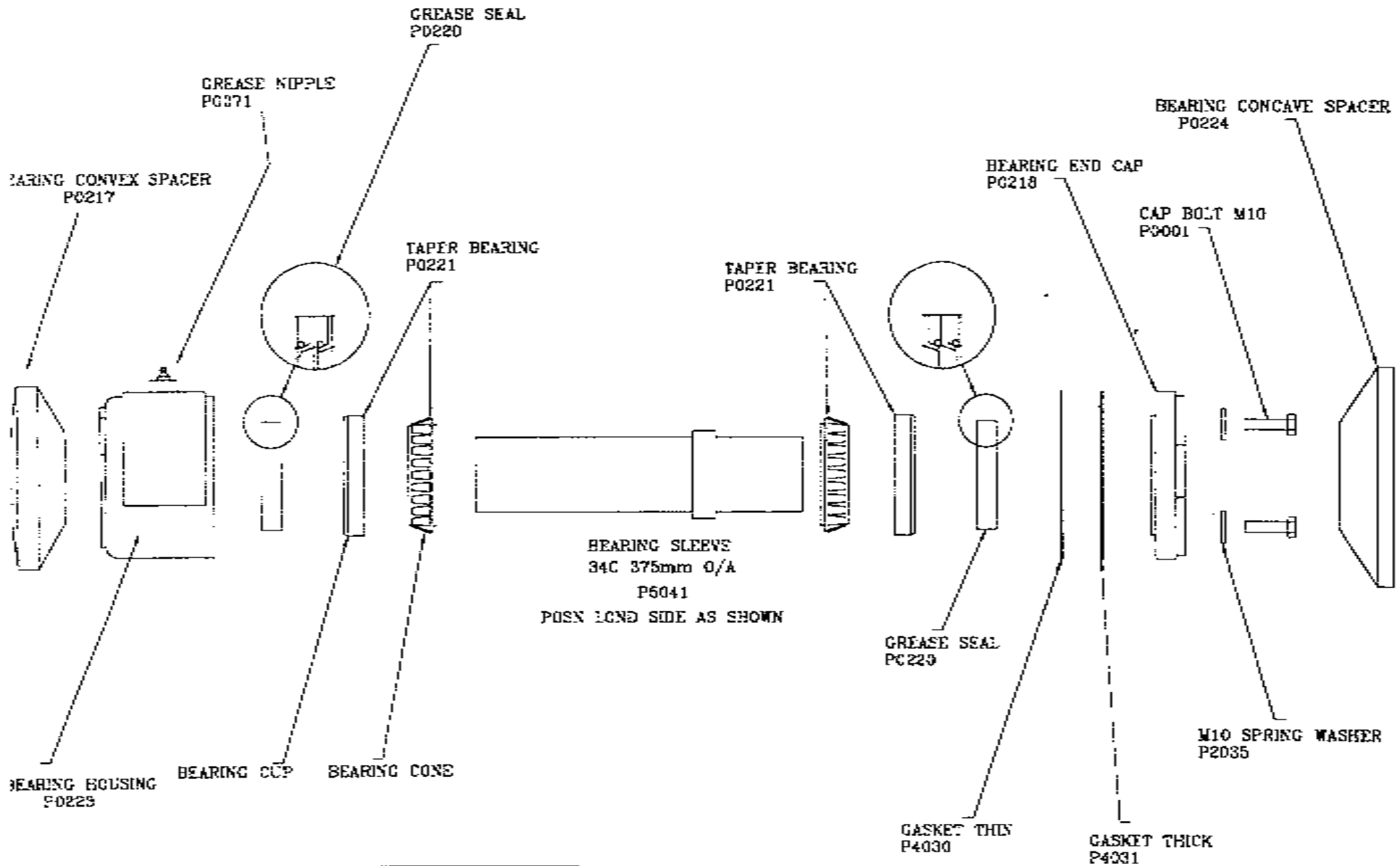
SERIES 1B - 230mm SPACING



SERIES 1C - 250mm SPACING

SERIES 1 BEARING - SPACER BUILD UP

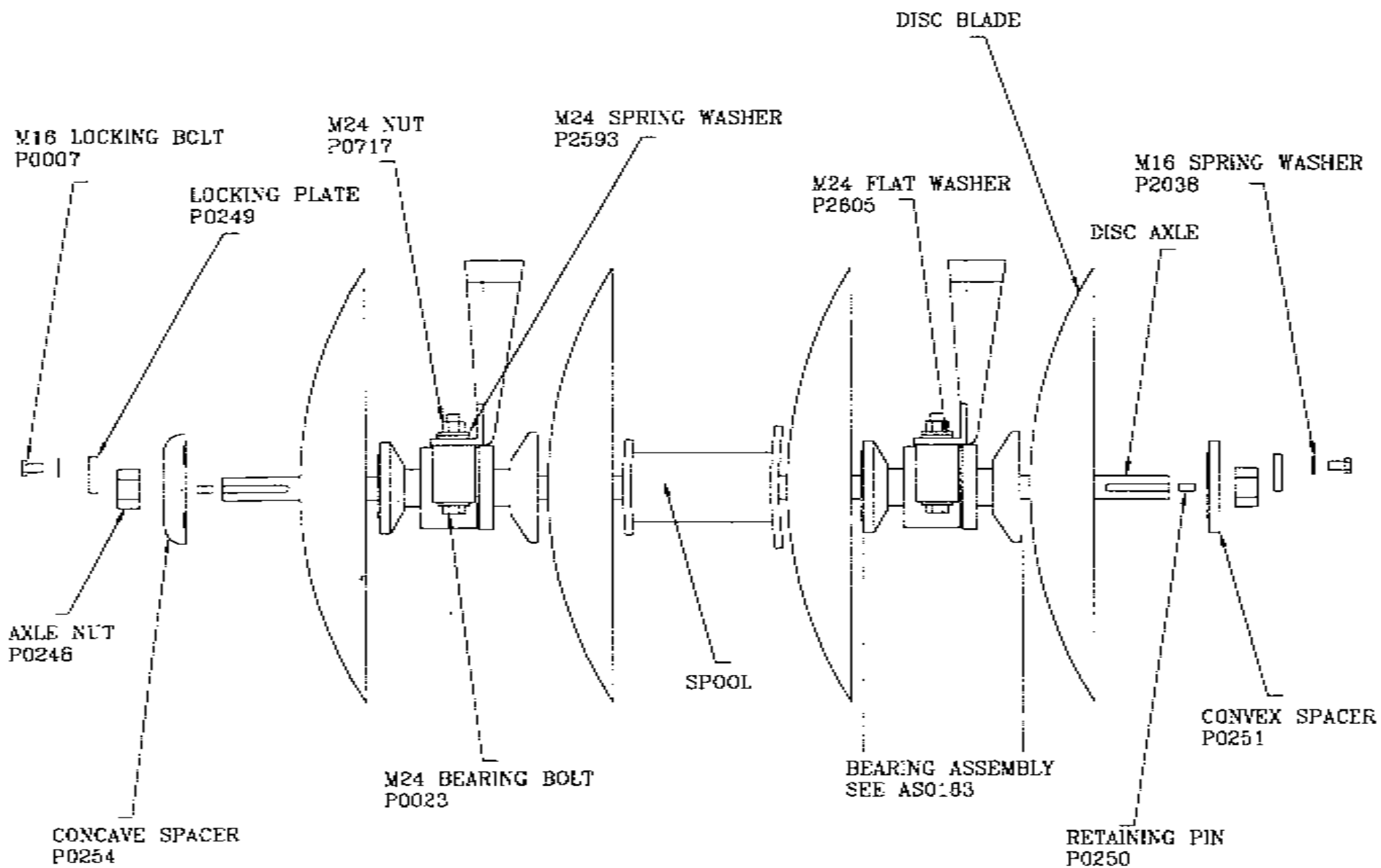
DATE	PART NUMBER	FROM SERIAL NO.	TO SERIAL NO.	ISSUE	DRAWING NO.
20/3/98 UPDATED					A AS0494



34C SERIES BEARING COMPLETE P5039

34C SERIES BEARING HOUSING ASSEMBLY

UPDATED	FROM SERIAL NO.	TO SERIAL NO.	ISSUE	DRAWING NO.
9/2/98	7272	PRS	1	AS0335



SERIES 2, 3, 23C, 34C DISC AXLE GENERAL ASSEMBLY

UPDATED

9/2/98

FROM SERIAL NO.

ALL

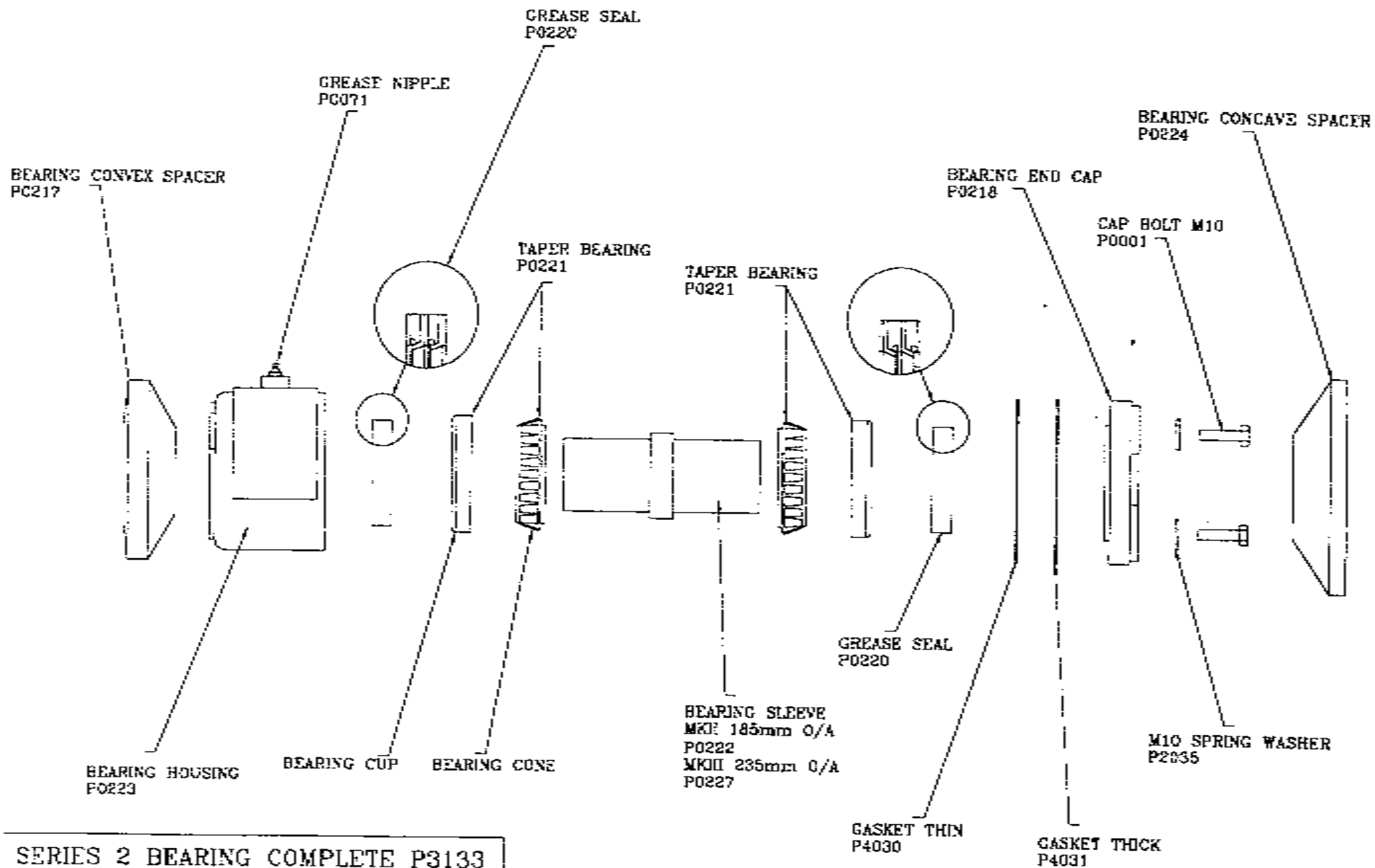
TC SERIAL NO

ISSUE

1

DRAWING NO

AS0182

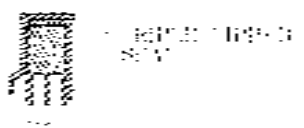


SERIES 2 BEARING COMPLETE P3133

SERIES 3 BEARING COMPLETE P3134

SERIES 2, 3, 23C BEARING HOUSING ASSEMBLY

UPDATED	FROM SERIAL NO.	TO SERIAL NO.	ISSUE	DRAWING NO.
9/2/98	ALL		1	AS0183



STEEL
304



BRASS



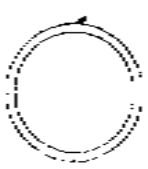
SHIELD
PART 1



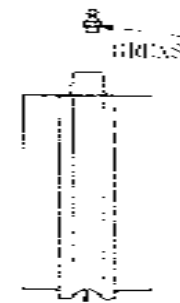
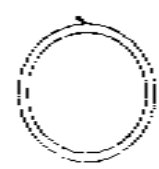
GREASE SEAL
PART 2



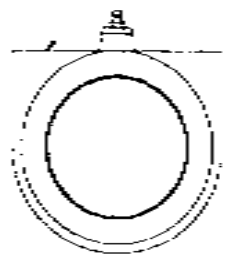
SHIELD
PART 3



BEARING & SLAVE
PART 4



BEARING HOUSING
LASTING BULLET



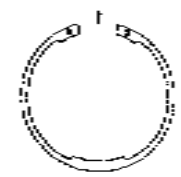
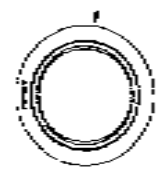
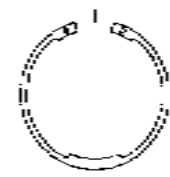
CIRCUIT
PART 5



GREASE SEAL
PART 6

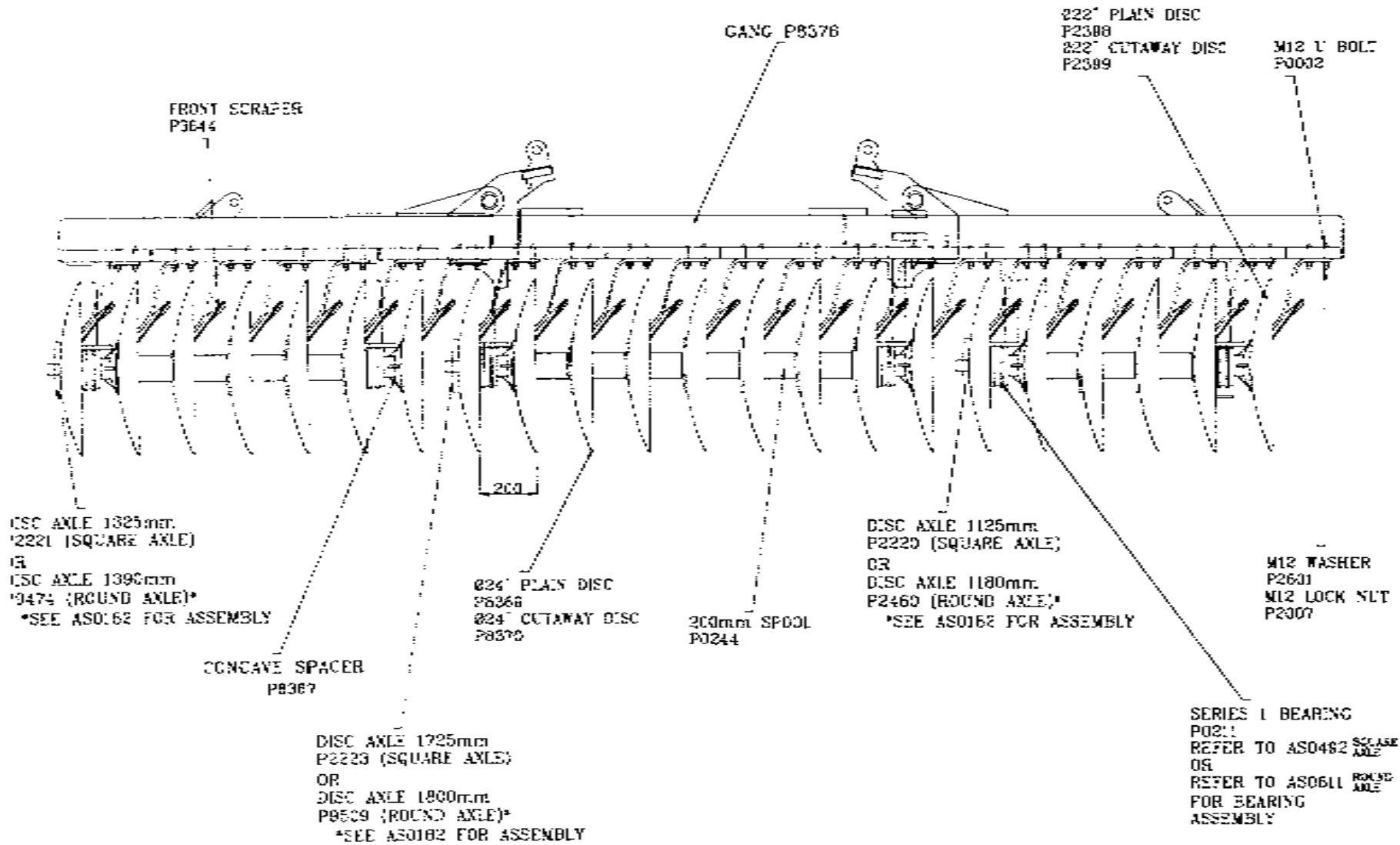


SHIELD
PART 7



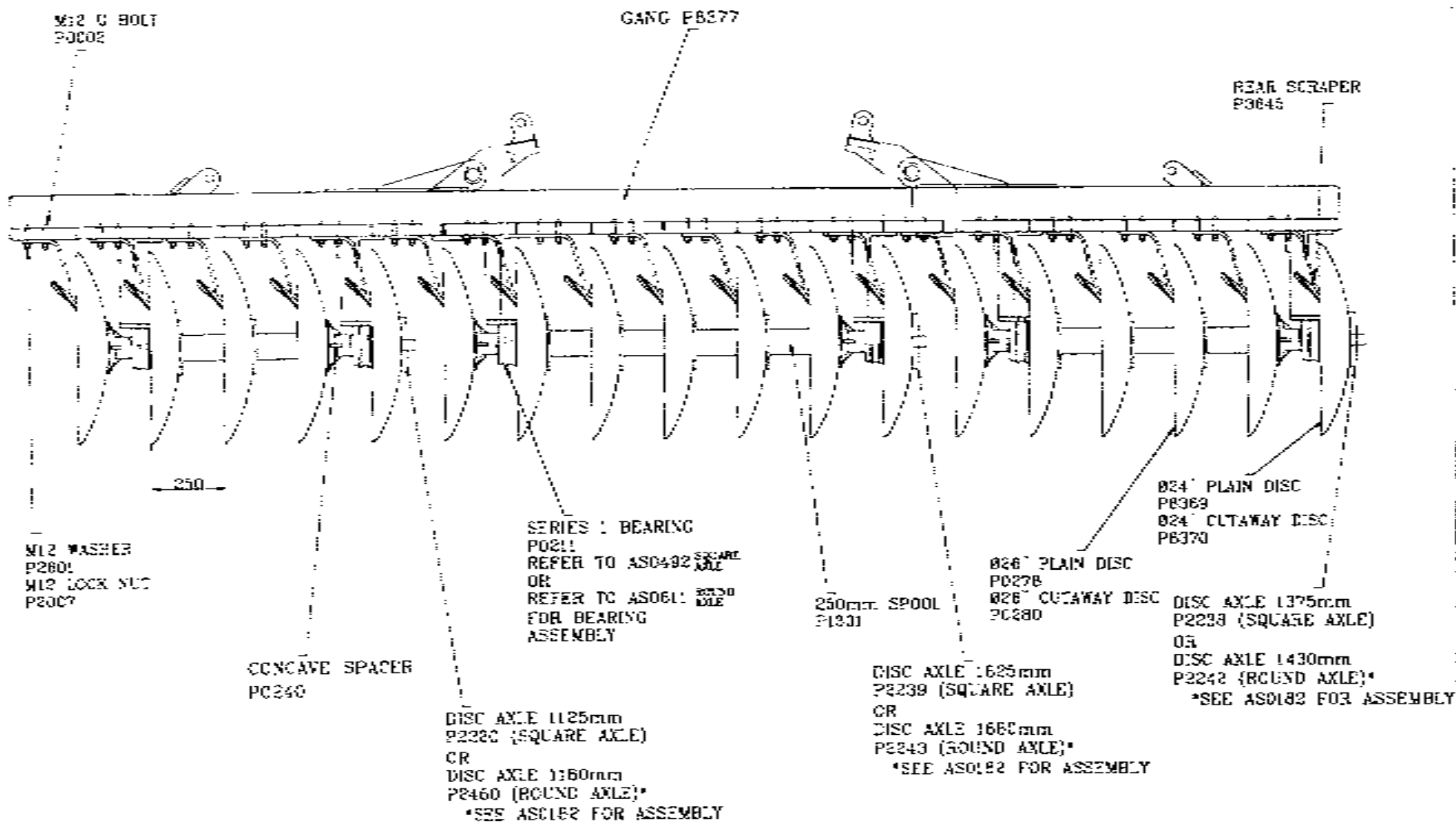
SERIES I BEARING ASSEMBLY 2000 TYPE ROUND

DRAWN BY	PART NUMBER	FROM SERIAL NO	TO SERIAL NO	ISSUE	DRAWING NO.
UPDATED	19271				AS0611



12C F/W DISC 14'6" FRONT GANG

DRAWN 02/05/00 UPDATED	PART NUMBER	FROM SERIAL NO.	TO SERIAL NO.	ISSUE	DRAWING NO AS0504
------------------------------	-------------	-----------------	---------------	-------	----------------------



12C F/W DISC 14"6" REAR GANG

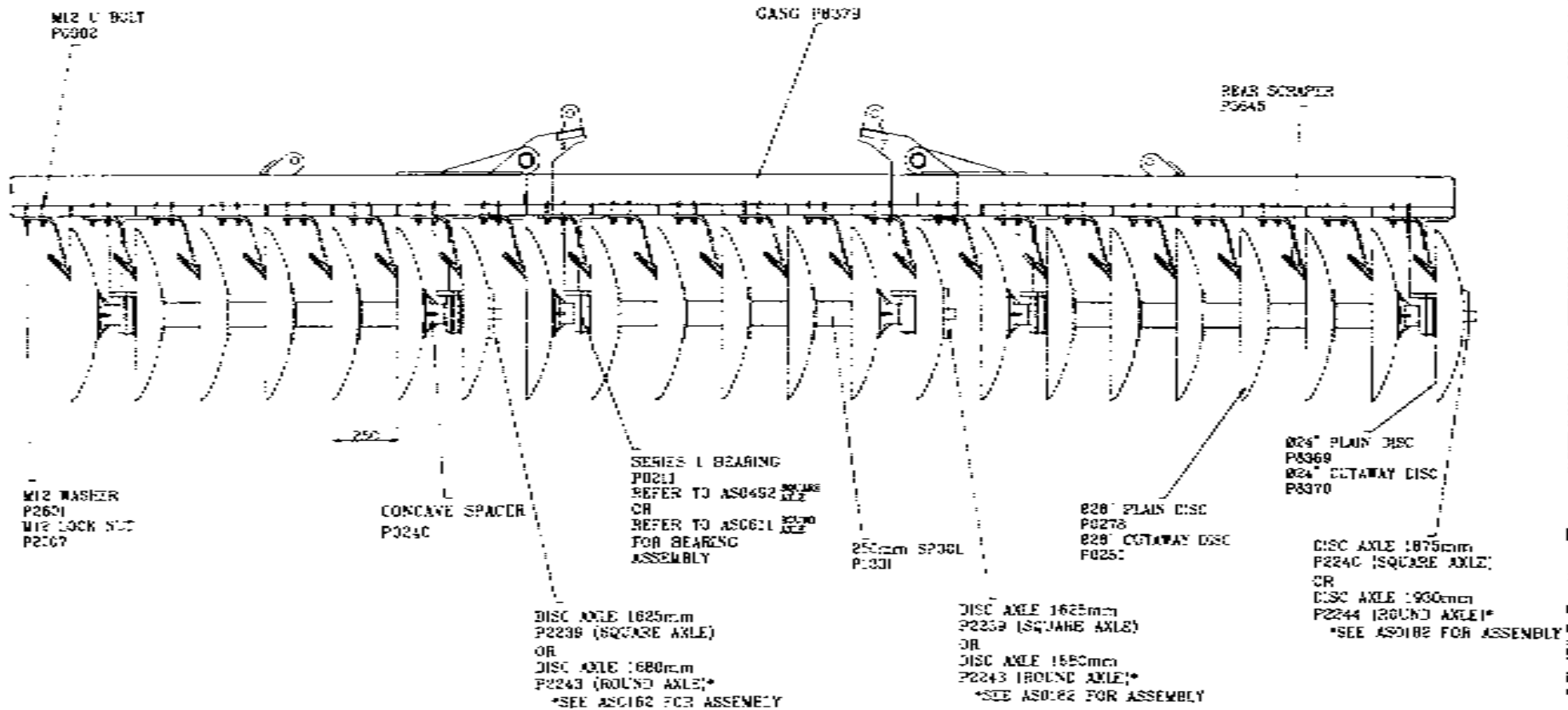
DRAWN
02/05/00
UPDATED

PART NUMBER

FROM SERIAL NO TO SERIAL NO.

ISSUE DRAWING NO.

AS0505

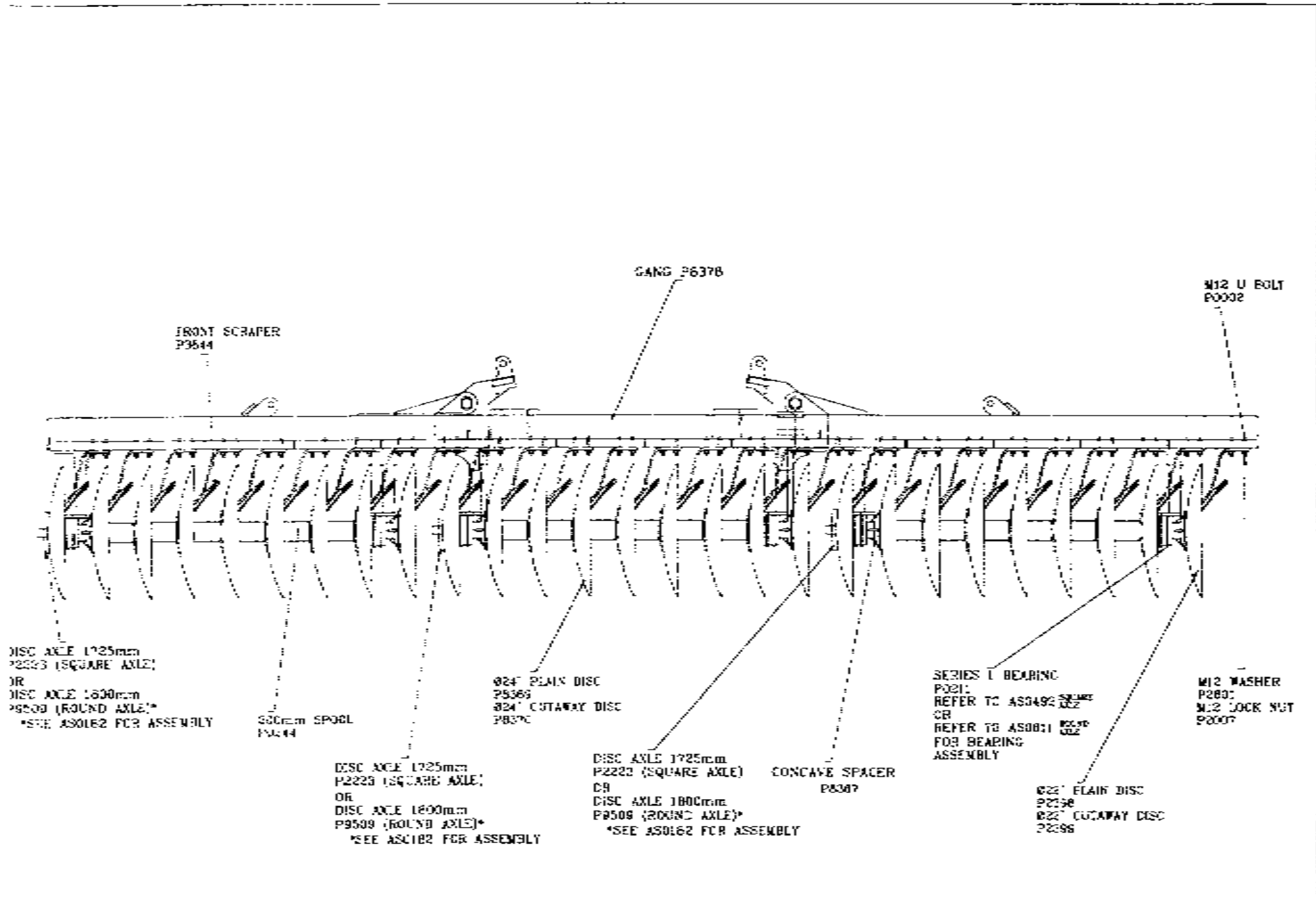


12C F/W DISC 17'6" REAR GANG

ISSUED
02/03/02
UPDATED

PART NUMBER FROM SERIAL NO TO SERIAL NO ISSUE DRAWING NO

AS0507

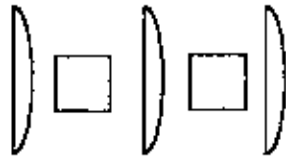


12C F/W DISC 17'6" FRONT GANG

DRAWN 02/05/02 UPDATED	PART NUMBER	FROM SERIAL NO TO SERIAL NO.	ISSUE	DRAWING NO. AS0506
------------------------------	-------------	------------------------------	-------	-----------------------

S2/3 - 14' NC REAR GANG

BLADES	SPACING	SPOOLS	SCRAPERS	BEARINGS
Ø30 - 14	300MM	P0257 - 6	P0895 - 15	P0226 - 6
Ø28 - 1				



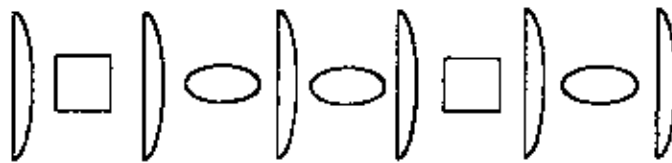
760MM

LH WING



1660MM

CTR



1660MM

RH WING

VIEWED FROM REAR

S2/3 - 14' NC FRONT GANG

BLADES	SPACING	SPOOLS	SCRAPERS	BEARINGS
Ø28 - 16	250MM	P0253 - 8	P0894 - 17	P0216 - 6
Ø26 - 1				



1180MM

LH WING



1680MM

CTR



1180MM

RH WING

VIEWED FROM REAR

S2/3 - 18' NC FRONT GANG

BLADES	SPACING	SPOOLS	SCRAPERS	BEARINGS
Ø28 - 20	250MM	P0253 - 12	P0894 - 21	P0216 - 6
Ø26 - 1				



1680MM

LH WING



1680MM

CTR



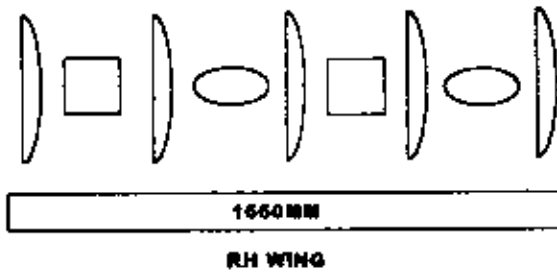
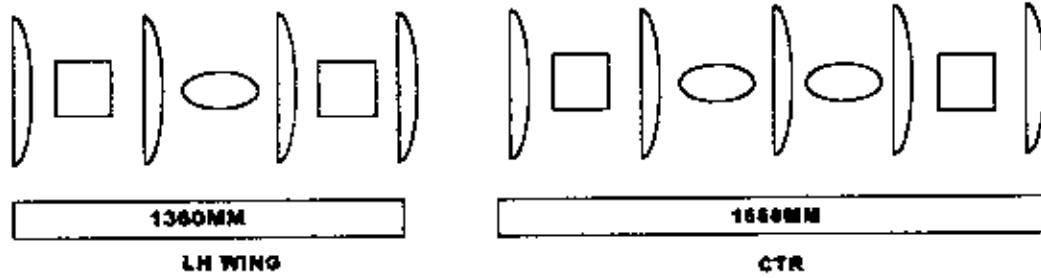
1680MM

RH WING

VIEWED FROM REAR

S3/4 - 16' NC REAR GANG

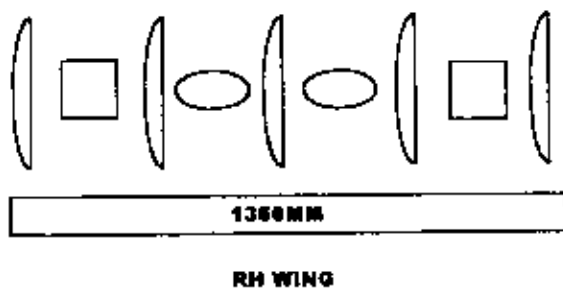
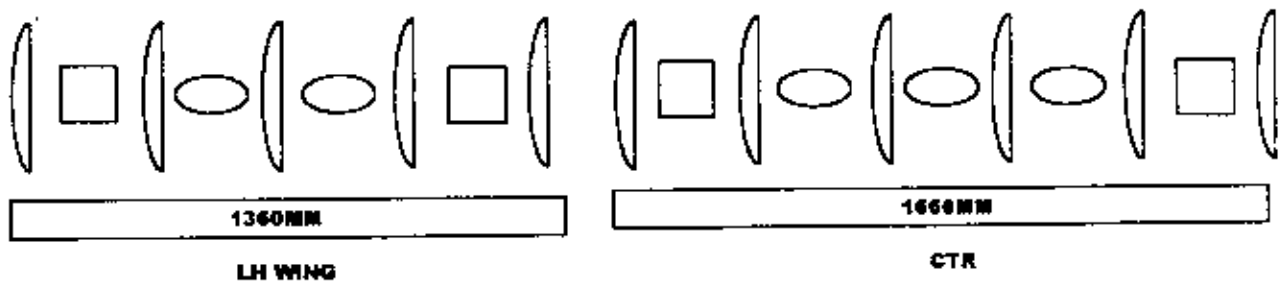
BLADES	SPACING	SPOOLS	SCRAPERS	BEARINGS
Ø32 - 13	375MM	P5041 - 5	P7430 - 14	P5039 - 6
Ø30 - 1				



VIEWED FROM REAR

S3/4 - 16' NC FRONTGANG

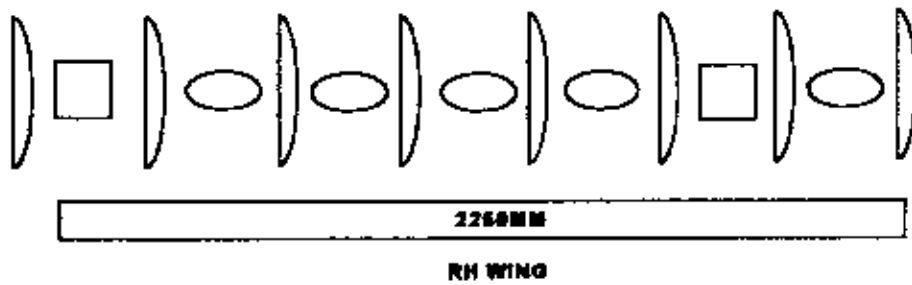
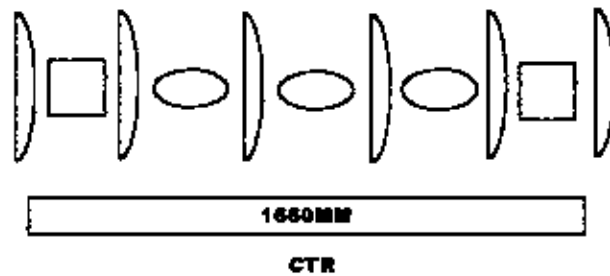
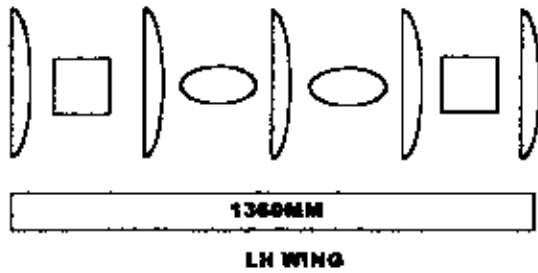
BLADES	SPACING	SPOOLS	SCRAPERS	BEARINGS
Ø30 - 15	300MM	P0257 - 7	P0894 - 16	P0226 - 6
Ø28 - 1				



VIEWED FROM REAR

S2/3 - 18' NC REAR GANG

BLADES	SPACING	SPOOLS	SCRAPERS	BEARINGS
Ø30 - 18	300MM	P0257 - 10	P0895 - 19	P0226 - 6
Ø28 - 1				



VIEWED FROM REAR