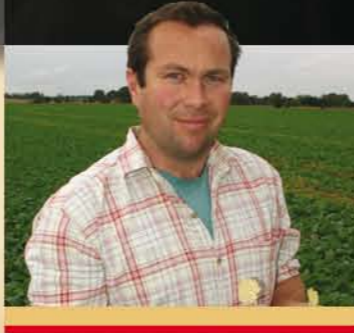


technical specifications

GEORGE ATKINSON

FOLKINGHAM
LINCOLNSHIRE



All models are fitted with 510mm diameter cutaway disc blades (610mm on the SL 700). Disc spacing on the leading and following disc gangs are 250mm giving a net disc spacing of 125mm. Both gangs are manually adjustable for angling. ST tines are fitted as standard across the range together with a rear drawbar and road lights front and rear.

Working Width	Transport Width	Weight	No. of Tines	Rear Roller	Tyre Size	Power	Configuration
4.0m	2.7m	5,850kg	10	600mmDD Lite	500/50-15	200-250hp	DTD* or DDT*
5.0m	2.7m	7,400kg	12	600mmDD Lite	500/50-15	250-300hp	DTD* or DDT*
6.0m	2.7m	8,400kg	14	600mmDD Lite	500/50-15	300-350hp	DTD* or DDT*
7.0m	3.0m	11,500kg	16	700mmDD	700/50-15	450hp+	DTD* only

*DDT - Disc, Disc Tine *DTD - Disc, Tine Disc

Optional Extras

- Low Disturbance (LD) Tines
- Brake kit - air or hydraulic
- Oilseed Rape kit (OSR kit)

“ It mixed the soil and trash exactly as we want it. We worked up to 10 inches deep, moving and lifting all the soil, to remove compaction. We also sowed oilseeds straight off the back of it. We were very impressed with how level it left the seedbed. ”



All models fold to a transport width of under 3 metres. Full European road lighting kit standard on all models



Oilseed Rape Applicator Kits are an optional extra on all models.



Heavy duty SL700 model available in Disc Tine Disc configuration only.

The NEW SL Range



SL400/500/600/700

A new dimension in cultivator performance



Simba International Ltd, Woodbridge Road, Sleaford, Lincolnshire. NG34 7EW. England
Tel: 01529 304654 • Website: www.simba.co.uk
Email: simba.international@simba.co.uk • Fax: 01529 413468



SL RANGE

SL RANGE

Designed to create a top quality level finish on all soil types

SL RANGE

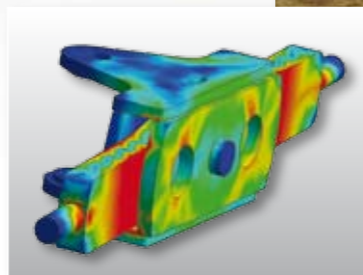


Designed to work on light/medium soil or soil that has a free draining or well structured subsoil, the SL range of cultivators from Simba further extends the product line from the company.

With all modern day machines, flexibility is paramount and although the SL range has been primarily designed to work in a reduced tillage system, it is equally at home working down ploughing on all soil types.

The design of these machines ensures that they can work at shallow depths with the discs and deeper depths with loosening tines as two distinct operations within the machine. This is a different concept to some machines where deeper working tines, for example, have to supplement the

working operation of discs. This can result in a compromise where clods are boiled to the surface, reducing seedbed quality. The key design



Stress testing on the frame using computer aided techniques.

Although new to the market, this range of cultivators has undergone rigorous testing and analysis both in the UK and throughout Europe and New Zealand. Farmers buying the SL cultivator do so safe in the knowledge that many acres



For the past 2 years the SL Range has been tested extensively on farms in the UK, Europe and Southern Hemisphere.

criteria of the tine being to give a complete shatter of the soil profile at depth without boiling clods and subsoil to the surface.

have been covered with prototype and pre-production machines and the designs have been fully validated for strength and durability using the latest computer aided techniques. This is vitally important in today's modern farming climate as it is often in the second and third years of operation that, fatigue failures, for example, caused by the heat-affected zones of structural welds, can occur.

(left) Designed for use with tractors of 450hp+, the heavy duty SL700 is only available in Disc, Tine Disc format. Front gauge wheels are standard on this model.

Another important factor in the design is the use of many of Simba's innovative and proven components throughout the range. These components such as the DD Rear Roller are proving so effective that many of the major European manufacturers of cultivation machinery are now buying these rollers from Simba to fit to their machines.

With working widths available from 4m, 5m and 6m right up to the heavy duty range topping 7m machine the horsepower requirements span from 200hp to over 500hp. Full European road lighting, optional brakes (both air or hydraulic) and Oilseed Rape Kits mean that this is a cultivator designed for today's farming climate and many years to come.



All models have hydraulic wing locks fitted as standard. Operators can therefore prepare the machine for road transport from the tractor seat.



Unrivalled flexibility with a choice of two configurations*

ERIC WATSON
 CANTERBURY PLAIN
 SOUTH ISLAND, NEW ZEALAND



“ This machine – with a press behind it - makes a seedbed in one pass most times. It works down pressed ploughing very effectively, and has incorporated turf very effectively when taking out leys. We have probably saved about 150 hours of work on 490 hectares. ”

Configuration 1

Disc, Disc Tine*

For conditions where there are high amounts of surface trash for example after maize, two rows of discs ahead of two rows of tines ensure a clear flow of crop residue through the machine.

(Oilseed Rape Kit illustrated is optional).



Configuration 2

Disc, Tine Disc

For normal conditions one row of discs followed by two rows of tines and a second set of discs.



(*not on the SL700)

The SL range features proven, innovative components

SL RANGE

COLIN MCGREGOR

COLDSTREAM
SCOTTISH BORDERS



MARTIN CLIFTON

APPLEDORE
KENT



Rear Drawbar

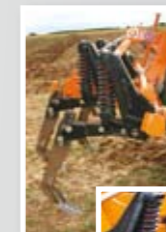
A rear drawbar with hydraulics comes as a standard fitment on all SL cultivators and provides the opportunity to pull a light roll or press in tandem with the cultivator. When an optional OSR Kit is fitted the rape seed is blown to the rear of the DD rings on a firmed level surface. A following roll consolidates the seed without loss of moisture.



ST Tines (LD Tines Optional)

Two rows of Shallow Tines (ST) are fitted as standard across the SL range. Tried, tested and proven over many years, the number of tines varies between 10 and 16, depending on the model/working width. With a trip force of around half a tonne, the Simba Horsch TerraGrip legs have six depth settings in 25mm increments and a choice of knock on points, to create a cultivation effect that can be readily matched to the soil type and conditions.

Low Disturbance (LD) Tines are available as an option. Developed over two years of trials, this innovative leg performs considerable cultivation and soil restructuring at depth in the root zone without disturbing or inverting any weathered tilth from the surface.



“We did one pass, drilled then rolled, and it did an excellent job. It also worked directly onto ploughing with a press behind it, and the excellent under-body clearance avoids the risk of blockages. Settings can be adjusted from the tractor cab and it is easy to set-up and operate”.

“We have covered 4,000 acres. It doesn't take much pulling and leaves the seedbed level. On some fields we ran twice; first with the tines doing comparatively little work; and then with them working deeper to do a more complete job. We are very pleased with it”.

Rear DD Roller



The soil is consolidated at the rear of the machine with a revised DD roller on the SL 400, 500 and 600 machines (the SL 700 retains the proven 700mm DD roller). 600mm rings at a closer spacing than normal not only firm the ground to depth but they

also leave a fine level tilth. A revised lower scraper between each pair of rings ensure that any blockages in damp conditions are minimised.

Simba's DD rings which are a key element in all SL machines are manufactured from chrome boron steel, which is the same material as used in all Simba disc blades. As the DD rings are working more passively than a conventional disc blade the improvement in wear is considerable.



2nd Row of Discs

(on DTD models only)

A rear row of serrated discs chop and mix surface trash ahead of the rear DD roller. This ensures a level profile irrespective of the type of tine option used.

Front Discs

(1 row on Disc, Tine Disc models, 2 rows on Disc, Disc Tine models)

At the front of the machine one or two rows of serrated discs chop and mix the surface trash. These discs are manufactured from boron steel to give extended working life and are 500mm (20") in diameter on the 4, 5 and 6m models and 600mm (24") on the heavy duty 7m machine. Each disc unit is mounted on a Pro-Active leaf spring allowing better contour following and improved stone protection. The discs working angle can be adjusted using a track rod system operated by a single handle giving stepless change. The feature offers the ability to vary the cultivation action depending on application i.e. stubble work or ploughing. Narrow angles are typically used to work down ploughing. Wide angles to maximise the mix and chopping action.

